

HOT WATER FOR ALL

A Quick Guide to Rheem Tankless Water Heaters



The new degree of comfort.®



Waking up to a cold morning, eagerly anticipating a hot, revitalizing shower, only to be met with icy water - it's a scenario many of us have faced. Cold showers, family conflicts over hot water, and unnecessary energy waste are all too familiar. But there's a modern solution that promises continuous hot water without the limitations of standard systems: Rheem® tankless water heaters.

Choosing Between Standard Water Heaters and Tankless Water Heaters:

In comparing standard water heaters to tankless options, it's essential to recognize the strengths of each. Standard heaters are budget-friendly and suitable for situations with high hot water demand in short bursts, allowing simultaneous use of the entire tank's capacity. However, they require time to reheat once depleted. On the other hand, tankless heaters offer continuous hot water over longer periods of time. Understanding flow rate needs is crucial for optimal performance. After reading this guide, you'll have everything you need to make the right decision for you.



What is a Tankless Water Heater?

Tankless water heaters heat water directly without a storage tank. When you turn on a hot water tap, cold water flows into the unit and is heated by a gas burner. This ensures a continuous supply of hot water on demand, without a bulky tank. Tankless units are compact and flexible, fitting virtually anywhere.

The Endless Advantages of Going Tankless:

Switching to a tankless water heater offers numerous benefits:

CONTINUOUS HOT WATER:

Say goodbye to cold showers and conflicts. Tankless water heaters provide a continuous supply of hot water, and never get cold.



ENERGY SAVINGS:

All gas tankless water heaters are more efficient than standard tank water heaters, with a condensing tankless being the most efficient with up to a .96 UEF rating.



SPACE SAVINGS:

Compact and flexible, tankless units save space and fit any home. In warmer climates, they can even be placed outside for greater space savings.



LONGEVITY AND LOWER COSTS:

Tankless water heaters become more affordable when you consider their long-term reliability and extended years of service. And with a tankless water heater, you benefit from a 15-year heat exchanger (HEX) warranty—two times longer than the average 6 year warranty for standard tank heaters.



Is Tankless Right for You?

Things to Think About as a Homeowner:

✓ EFFICIENCY MATTERS:

Think of it like miles per gallon for your water heater. The higher the Uniform Energy Factor (UEF) rating, the more efficiently it converts energy into hot water. Standard gas tank type water heaters hover around 0.58, but tankless can reach up to 0.96, saving you bucks on your bills.

✓ LOCATION, LOCATION, LOCATION:

Tankless units need gas lines, and electricity from a 120V plug. If your current setup isn't ready, installation costs will apply. Plus, modifications may be needed for electrical and venting requirements, that could also add to the bill.

✓ KNOW YOUR FLOW:

Knowing your flow rate is key in picking the right tankless water heater. Average flow rates help you figure out how much hot water you need if each application is running simultaneously. By understanding this, you can choose the perfect tankless model for your needs. When in doubt, a Rheem plumber will always know exactly what you need.

Average Flow Rates (GPM) by Application

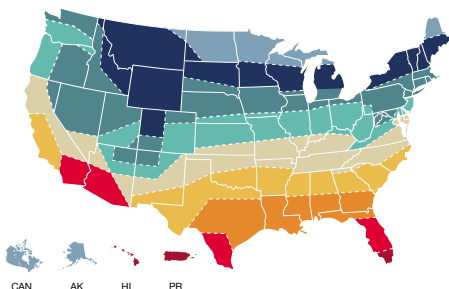
Low Flow Faucet	0.5
Bathroom Faucet	1
Kitchen Faucet	1.5
Shower	2
Dishwasher	2
Washing Machine	3

Flow rates may vary.

✓ CLIMATE CHECK:

Cold regions with low-temperature groundwater mean more work for your water heater. Tankless systems heat water on demand, so knowing your groundwater temp matters. Colder areas require more heating, affecting tankless system output. Check the map below to see how your area plays a role, or call your Rheem professional who can help you determine the ideal setup based on your location.

US Ground Water Temperature Zone Map



Flow Rate Capacity Table by Zone (Gallons Per Minute - GPM)

Use the U.S. Ground Water Temperature Map to locate your zone. You can find the estimated flow rate for each zone on a tankless product's specification sheet, which can be found on Rheem.com. Tankless models with higher BTU inputs have higher flow rates than models with lower BTU inputs.

Zone 1 37°F	Zone 2 42°F	Zone 3 47°F	Zone 4 52°F	Zone 5 57°F	Zone 6 62°F	Zone 7 67°F	Zone 8 72°F	Zone 9 77°F
----------------	----------------	----------------	----------------	----------------	----------------	----------------	----------------	----------------

Lower Flow Rate Higher Flow Rate

- ✓ **DIY OR PRO INSTALL?** You could try to save on installation by going the DIY route, but there are risks when working with gas. To ensure you get the most out of your tankless water heater, go with professional Rheem installation. You can rest assured knowing your new system is hooked up safely and will operate at peak efficiency.

What People Are Saying:

Actual
Customer
Reviews

Customers rave about their Rheem tankless water heaters:

“Just what the doctor ordered! Fill up a large garden tub to the brim with piping hot water. Teenagers taking an hour long shower no problem.”

“It works great and gives me all the hot water I can use.”

Why Tankless Hot Water Heaters are Gaining Steam: Fast Facts



Water heating accounts for up to **18% of a home's energy usage.**



Energy consumption impacts the environment, driving interest in energy-efficient alternatives like tankless water heaters.

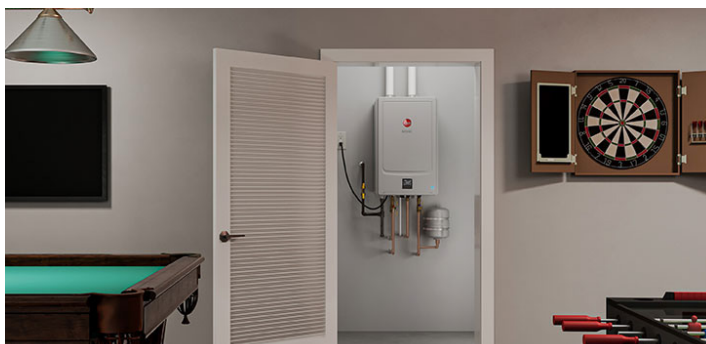
the average family of 4 uses roughly **60 gallons** of hot water a day



Standby heat loss with tank type water heaters contributes to **higher energy bills**

Tankless: **15 year** warranty means longer lifespan.

Standard Water Heater: **6 year** warranty.



Tankless water heaters offer a modern solution to the age-old problem of running out of hot water. With Rheem tankless water heaters, you're not just upgrading your home - you're embracing comfort, efficiency, and sustainability.

Three Degrees of Comfort

Rheem offers a range of tankless water heaters, including the IKONIC, RTGH, and RTG series, each designed to provide efficient and continuous hot water supply while saving space and energy.



RHEEM IKONIC SUPER HIGH EFFICIENCY CONDENSING GAS TANKLESS WATER HEATER WITH RECIRCULATION AND WI-FI

- Highest efficiency – 0.96 UEF – ENERGY STAR® rated
- Save up to 36% per year in energy costs over a standard 50-gallon gas residential tank water heater.*
- Qualifies for local utility rebates and tax credit under the Inflation Reduction Act
- Save up to 12,000 gallons of water from being wasted down the drain annually with the built-in recirculation pump (SR-Series models only)
- Smart control powered by EcoNet® technology**



RTGH SERIES SUPER HIGH EFFICIENCY CONDENSING TANKLESS GAS WATER HEATER WITH BUILT-IN WI-FI

- Higher efficiency - 0.93 UEF
- Smart control powered by EcoNet® technology**
- LeakGuard® Leak Detection and Prevention System



RTG SERIES EFFICIENCY NON-CONDENSING TANKLESS GAS WATER HEATER WITH BUILT-IN WI-FI

- High efficiency - 0.82 UEF
- Smart control powered by EcoNet® technology**
- LeakGuard® Leak Detection and Prevention System

*Disclaimer: Based on comparison of Rheem® IKONIC® S/SR models against standard residential 50-gallon tank type model with like fuel type.

** Select Models



Ready to make the switch?

Learn more at [rheem.com/tankless](https://www.rheem.com/tankless)